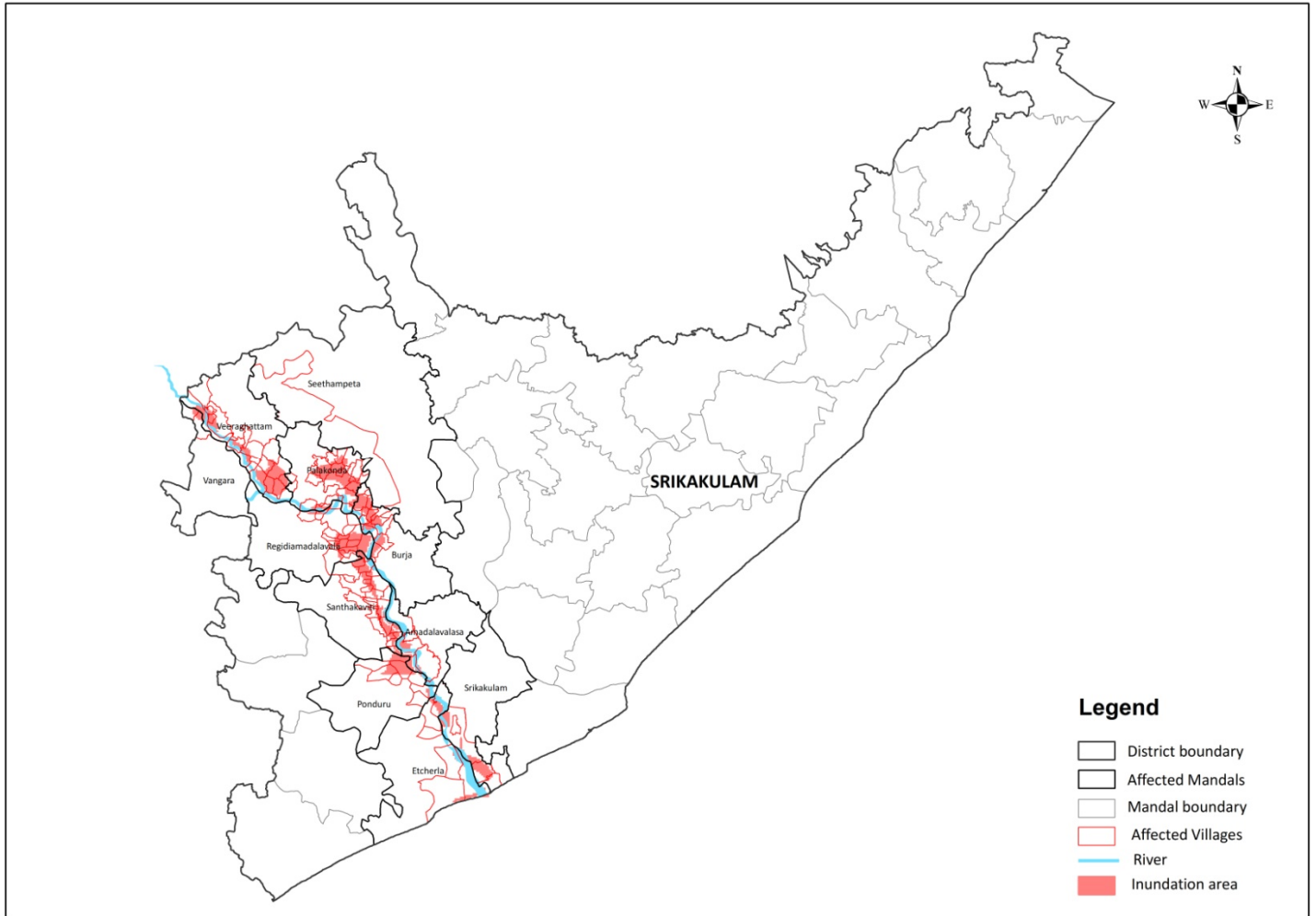


Probable villages inundation due to flooding in Nagavali River



Probable Village inundation due to flooding in Nagavali River with Q=0.84 Lakh Cusecs			
S.No	DISTRICT	MANDAL	VILLAGE
1	SRIKAKULAM	AMADALAVALASA	M.k.valasa
2	SRIKAKULAM	AMADALAVALASA	Kothavalasa
3	SRIKAKULAM	AMADALAVALASA	Kalivaram
4	SRIKAKULAM	AMADALAVALASA	Dusi
5	SRIKAKULAM	AMADALAVALASA	Belalamam
6	SRIKAKULAM	BURJA	Haripurampallapuram
7	SRIKAKULAM	BURJA	Donkalapartha
8	SRIKAKULAM	BURJA	Thuddali
9	SRIKAKULAM	BURJA	Marripadu
10	SRIKAKULAM	BURJA	Palavalasa
11	SRIKAKULAM	BURJA	Paravasturamannapeta
12	SRIKAKULAM	BURJA	Vandra (ui)
13	SRIKAKULAM	BURJA	Yetivoddupartha

S.No	DISTRICT	MANDAL	VILLAGE
14	SRIKAKULAM	BURJA	Lakkupuram
15	SRIKAKULAM	BURJA	Neelapuram
16	SRIKAKULAM	BURJA	Kilantra
17	SRIKAKULAM	BURJA	Peddapeta
18	SRIKAKULAM	BURJA	Gangabhagiradhipuram
19	SRIKAKULAM	BURJA	Allena
20	SRIKAKULAM	BURJA	Burja
21	SRIKAKULAM	BURJA	Vavam
22	SRIKAKULAM	BURJA	Kakandyam
23	SRIKAKULAM	ETCHERLA	Jarapinaidupeta
24	SRIKAKULAM	ETCHERLA	Kusalapuram
25	SRIKAKULAM	ETCHERLA	Duppalavalasa
26	SRIKAKULAM	ETCHERLA	Ponnada
27	SRIKAKULAM	ETCHERLA	Bontalakoduru
28	SRIKAKULAM	ETCHERLA	Kaluriacaryulaagraharam
29	SRIKAKULAM	PALAKONDA	Voni
30	SRIKAKULAM	PALAKONDA	Gudivada
31	SRIKAKULAM	PALAKONDA	Pedakotipalle
32	SRIKAKULAM	PALAKONDA	Bhasuru
33	SRIKAKULAM	PALAKONDA	Parasuramapuram
34	SRIKAKULAM	PALAKONDA	Aradala
35	SRIKAKULAM	PALAKONDA	Velagavada
36	SRIKAKULAM	PALAKONDA	Lumburu
37	SRIKAKULAM	PALAKONDA	Garugubilli
38	SRIKAKULAM	PALAKONDA	Palakonda (pt)
39	SRIKAKULAM	PALAKONDA	Singannavalasa
40	SRIKAKULAM	PALAKONDA	Bejji
41	SRIKAKULAM	PALAKONDA	Tummarada
42	SRIKAKULAM	PALAKONDA	T.d.parapuram
43	SRIKAKULAM	PALAKONDA	Kondapuram
44	SRIKAKULAM	PALAKONDA	Gopalapuram
45	SRIKAKULAM	PALAKONDA	Chinamangalapuram
46	SRIKAKULAM	PALAKONDA	Ampili
47	SRIKAKULAM	PALAKONDA	Gottamangalapuram
48	SRIKAKULAM	PONDURU	Gokarnpalle
49	SRIKAKULAM	PONDURU	Laidam
50	SRIKAKULAM	PONDURU	Tadivalasa
51	SRIKAKULAM	PONDURU	Gorinta
52	SRIKAKULAM	PONDURU	Boddepalle
53	SRIKAKULAM	PONDURU	Alamajipeta

S.No	DISTRICT	MANDAL	VILLAGE
54	SRIKAKULAM	PONDURU	Singuru
55	SRIKAKULAM	PONDURU	Kinthali
56	SRIKAKULAM	REGIDIAMADALAVALA	Regadi
57	SRIKAKULAM	REGIDIAMADALAVALA	Sankili
58	SRIKAKULAM	REGIDIAMADALAVALA	Cheli Gani Valasa
59	SRIKAKULAM	REGIDIAMADALAVALA	Komera
60	SRIKAKULAM	REGIDIAMADALAVALA	Devudala
61	SRIKAKULAM	REGIDIAMADALAVALA	Appapuram
62	SRIKAKULAM	REGIDIAMADALAVALA	Khandyam
63	SRIKAKULAM	REGIDIAMADALAVALA	Kondala Mamidi Valasa
64	SRIKAKULAM	REGIDIAMADALAVALA	Gopem Peta
65	SRIKAKULAM	REGIDIAMADALAVALA	Laxmipuram
66	SRIKAKULAM	REGIDIAMADALAVALA	Adavaram
67	SRIKAKULAM	REGIDIAMADALAVALA	Vandanapeta
68	SRIKAKULAM	REGIDIAMADALAVALA	Chataya Valasa
69	SRIKAKULAM	REGIDIAMADALAVALA	Akkanna Agraharam
70	SRIKAKULAM	REGIDIAMADALAVALA	Ambakhandi
71	SRIKAKULAM	REGIDIAMADALAVALA	Uppara Naiduvalasa
72	SRIKAKULAM	REGIDIAMADALAVALA	Vannali
73	SRIKAKULAM	SANTHAKAVITI	Madhavarayapuram
74	SRIKAKULAM	SANTHAKAVITI	M.v.ramayya Agraharam
75	SRIKAKULAM	SANTHAKAVITI	Kondagudem
76	SRIKAKULAM	SANTHAKAVITI	Javam
77	SRIKAKULAM	SANTHAKAVITI	Krishnamvalasa
78	SRIKAKULAM	SANTHAKAVITI	Kottururamachandrapuram
79	SRIKAKULAM	SANTHAKAVITI	Sankaruniagraharam
80	SRIKAKULAM	SANTHAKAVITI	Vasudevapuram
81	SRIKAKULAM	SANTHAKAVITI	Gollavalasa
82	SRIKAKULAM	SANTHAKAVITI	Santhakaviti
83	SRIKAKULAM	SANTHAKAVITI	Chennaiahpeta
84	SRIKAKULAM	SANTHAKAVITI	Akkarapalli
85	SRIKAKULAM	SANTHAKAVITI	Kakarapalli
86	SRIKAKULAM	SANTHAKAVITI	Honjaram
87	SRIKAKULAM	SANTHAKAVITI	Mandarada
88	SRIKAKULAM	SANTHAKAVITI	Ramarayapuram
89	SRIKAKULAM	SANTHAKAVITI	Podali
90	SRIKAKULAM	SANTHAKAVITI	Manthina
91	SRIKAKULAM	SANTHAKAVITI	Chittaripuram
92	SRIKAKULAM	SANTHAKAVITI	Garanaidupeta
93	SRIKAKULAM	SANTHAKAVITI	Panasapeta

S.No	DISTRICT	MANDAL	VILLAGE
94	SRIKAKULAM	SANTHAKAVITI	Valtair
95	SRIKAKULAM	SANTHAKAVITI	Kavali
96	SRIKAKULAM	SEETHAMPETA	Tanginibhadra(ui)
97	SRIKAKULAM	SRIKAKULAM	Pathasrikakulam(rural)
98	SRIKAKULAM	SRIKAKULAM	Kallepalle
99	SRIKAKULAM	SRIKAKULAM	Mofasbandar
100	SRIKAKULAM	VANGARA	J K Gumada
101	SRIKAKULAM	VANGARA	Rajulagumada
102	SRIKAKULAM	VEERAGHATTAM	Kadakella
103	SRIKAKULAM	VEERAGHATTAM	Kimmi
104	SRIKAKULAM	VEERAGHATTAM	Srihari Puram(ui)
105	SRIKAKULAM	VEERAGHATTAM	Vikrampuram
106	SRIKAKULAM	VEERAGHATTAM	Nadukuru
107	SRIKAKULAM	VEERAGHATTAM	V.venkampeta
108	SRIKAKULAM	VEERAGHATTAM	Chidimi
109	SRIKAKULAM	VEERAGHATTAM	Vanduva
110	SRIKAKULAM	VEERAGHATTAM	Palametta Viziamapura
111	SRIKAKULAM	VEERAGHATTAM	Adaru
112	SRIKAKULAM	VEERAGHATTAM	Tettangi
113	SRIKAKULAM	VEERAGHATTAM	Deppivalasa
114	SRIKAKULAM	VEERAGHATTAM	Chebyyamvalasa
115	SRIKAKULAM	VEERAGHATTAM	Bitiwada
116	SRIKAKULAM	VEERAGHATTAM	Talavaram
117	SRIKAKULAM	VEERAGHATTAM	Kummarigunta
118	SRIKAKULAM	VEERAGHATTAM	Neelanagaram
119	SRIKAKULAM	VEERAGHATTAM	Panasanandivada